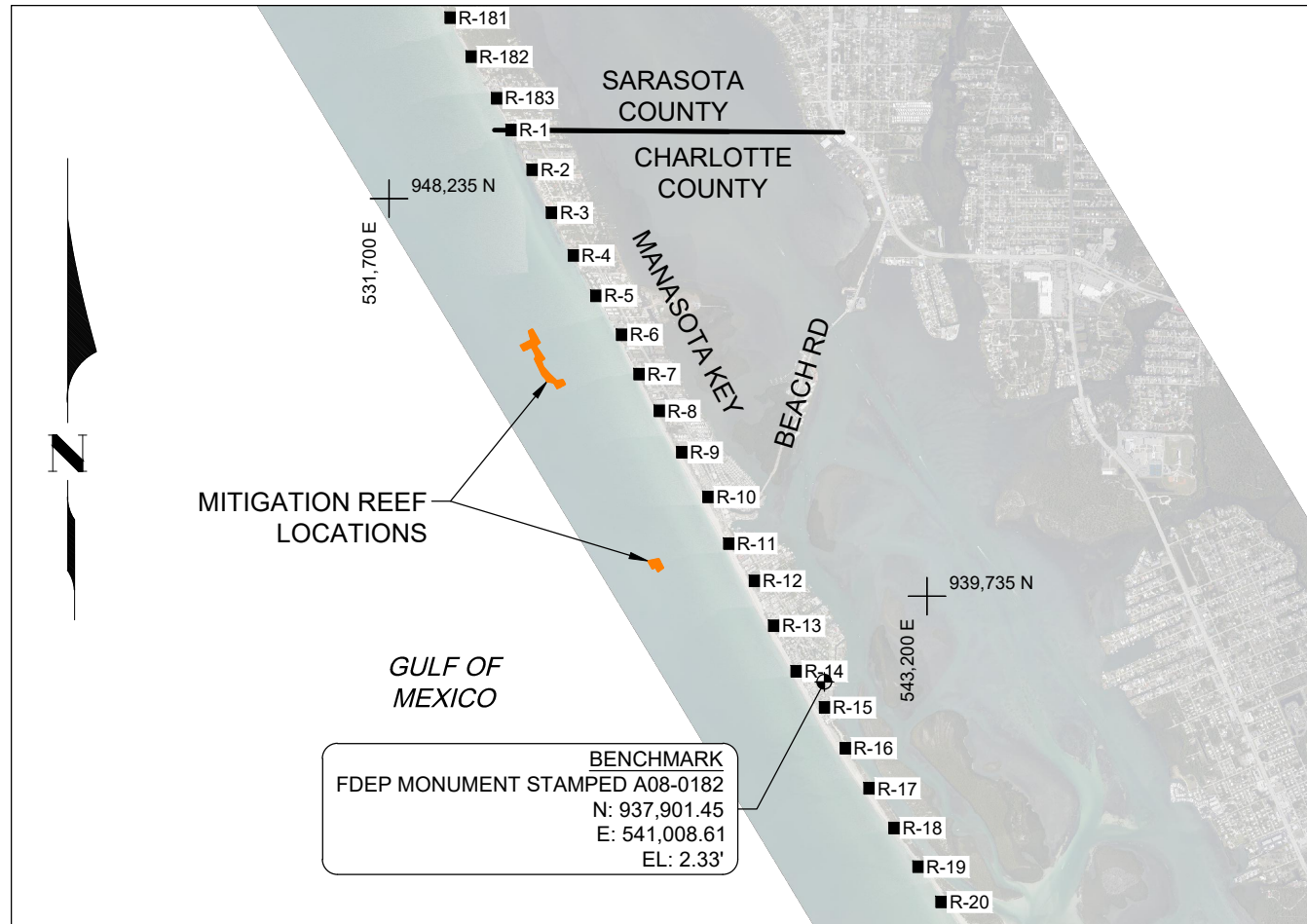


MANASOTA KEY MITIGATION REEF

PREPARED FOR:
CHARLOTTE COUNTY BOARD OF COMMISSIONERS



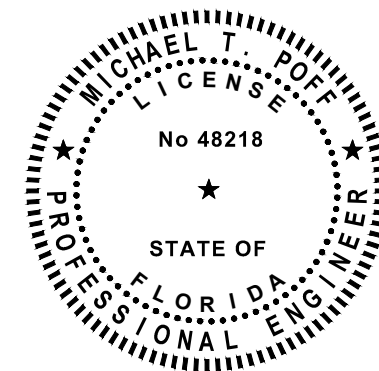
LOCATION MAP
 SCALE: 1" = 4,000'

INDEX

1. COVER SHEET
2. PLAN VIEW
3. BOUNDARY AREAS
4. DETAILS AND NOTES

GENERAL NOTES

1. PLANE COORDINATES ARE BASED ON THE TRANSVERSE MERCATOR PROJECTION FOR THE WEST ZONE OF FLORIDA AND REFERENCED TO THE NORTH AMERICAN DATUM OF 1983 (NAD 83).
2. ELEVATIONS SHOWN HEREON ARE IN FEET AND TENTHS AND REFERENCED TO THE NORTH AMERICAN VERTICAL DATUM OF 1988 (NAVD 1988).
3. MEAN HIGH WATER ELEVATION OF +0.32 FEET NAVD88 IS BASED ON INTERPOLATION BETWEEN TIDE STATIONS 872 5858 VENICE AIRPORT AND 872 5110 NAPLES. TIDAL EPOCH REFERENCED AT TIDE STATIONS IS 1983 - 2001.
4. INFORMATION SHOWN HEREON REFLECTS CONDITIONS AS THEY EXISTED ON THE SURVEY DATE SHOWN AND CAN ONLY BE CONSIDERED INDICATIVE OF CONDITIONS AT THAT TIME.
5. AERIAL PHOTOGRAPHY PROVIDED BY PICKETT & ASSOCIATES, INC., DATED 2019.



COASTAL ENGINEERING CONSULTANTS, INC.
 A GROUP COMPANY
 Serving Florida Since 1977
 3106 SOUTH HORSESHOE DRIVE
 NAPLES, FLORIDA 34104

CLIENT: CHARLOTTE COUNTY BOARD OF COMMISSIONERS

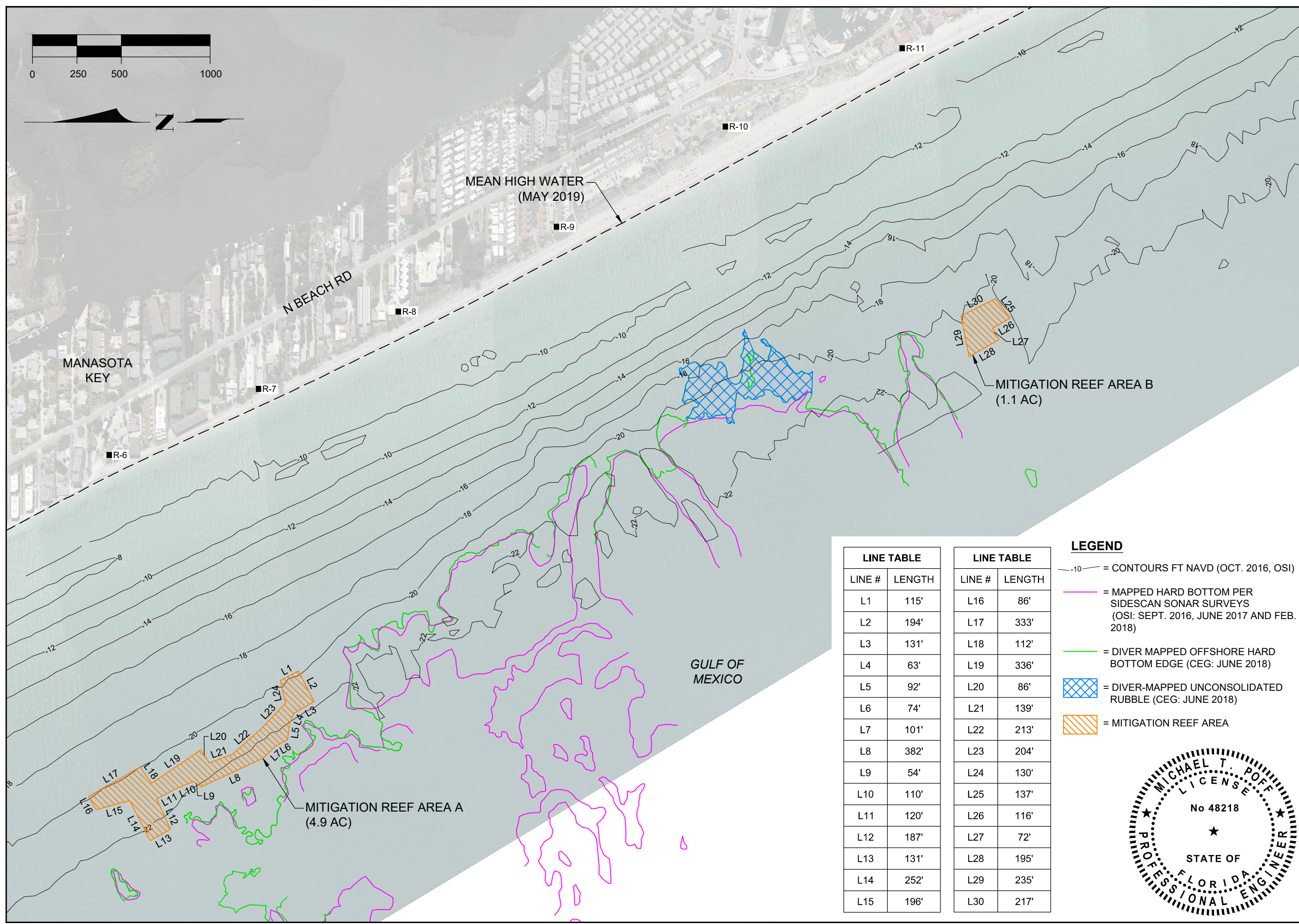
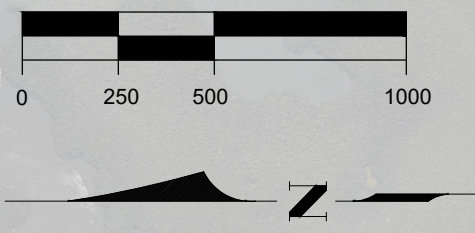
TITLE: MANASOTA KEY
 MITIGATION REEF
 COVER SHEET

COASTAL AND MARINE ENGINEERING
 ENVIRONMENTAL SERVICES
 GEOLOGICAL SERVICES
 SURVEY AND MAPPING

PHONE: (239)643-2324
 FAX: (239)643-1143
 www.coastalengineering.com
 E-Mail: info@cecill.com

DATE:	7/15/2019	SCALE:	AS NOTED
DRAWN:	SDB	FB:	
CHECKED:	MTP	PG:	
SEC:	TWP:	RNG:	
ACAD NO:	19082-Mitigation Reef.dwg		
REF. NO:			

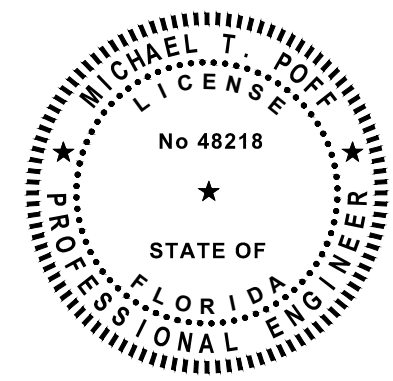
NO.	DATE	BY	REVISION DESCRIPTION
19,082			



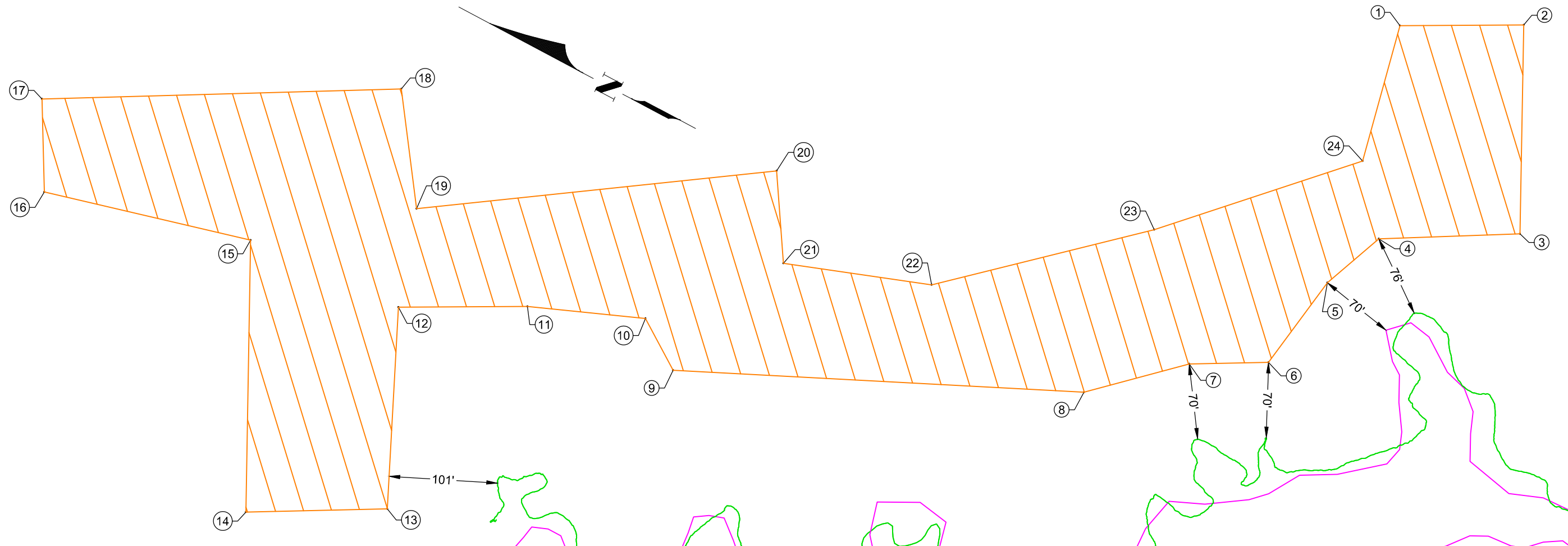
LINE TABLE	
LINE #	LENGTH
L1	115'
L2	194'
L3	131'
L4	63'
L5	92'
L6	74'
L7	101'
L8	382'
L9	54'
L10	110'
L11	120'
L12	187'
L13	131'
L14	252'
L15	196'

LINE TABLE	
LINE #	LENGTH
L16	86'
L17	333'
L18	112'
L19	336'
L20	86'
L21	139'
L22	213'
L23	204'
L24	130'
L25	137'
L26	116'
L27	72'
L28	195'
L29	235'
L30	217'

- LEGEND**
- 10 = CONTOURS FT NAVD (OCT. 2016, OSI)
 - [Pink line] = MAPPED HARD BOTTOM PER SIDESCAN SONAR SURVEYS (OSI: SEPT. 2016, JUNE 2017 AND FEB. 2018)
 - [Green line] = DIVER MAPPED OFFSHORE HARD BOTTOM EDGE (CEG: JUNE 2018)
 - [Blue cross-hatch] = DIVER-MAPPED UNCONSOLIDATED RUBBLE (CEG: JUNE 2018)
 - [Orange cross-hatch] = MITIGATION REEF AREA



DATE: 7/15/2019 SCALE: AS NOTED DRAWN: SDB/FB CHECKED: MTP/PG SEC: TWP/RNG ACAD NO: 19082-Mitigation Reef.dwg REF. NO: 19,082	CLIENT: CHARLOTTE COUNTY BOARD OF COMMISSIONERS TITLE: MANASOTA KEY MITIGATION REEF PLAN VIEW COASTAL AND MARINE ENGINEERING, ENVIRONMENTAL SERVICES, GEOLOGICAL SERVICES, SURVEY AND MAPPING PHONE: (239)643-2324 FAX: (239)643-1143 www.coastalengineering.com E-Mail: info@cecill.com	SHEET 2 FILE NO.: 19082-REEF-2
---	--	-----------------------------------

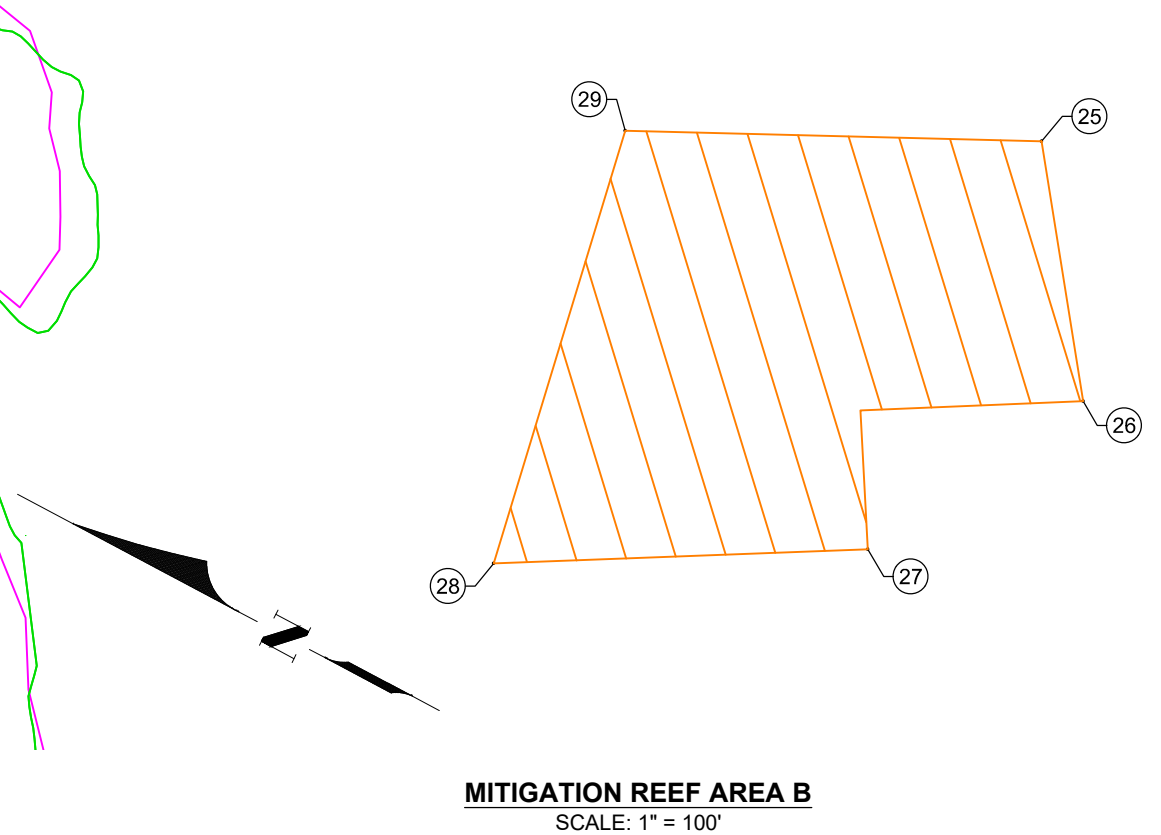


MITIGATION REEF AREA A
SCALE: 1" = 100'

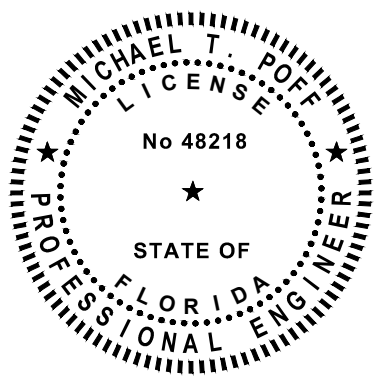
BOUNDARY COORDINATE TABLE		
POINT	NORTHING	EASTING
1	944,364	535,415
2	944,263	535,469
3	944,175	535,297
4	944,289	535,231
5	944,312	535,173
6	944,325	535,082
7	944,389	535,046
8	944,463	534,977
9	944,810	534,816
10	944,855	534,847
11	944,957	534,805
12	945,062	534,748
13	944,983	534,578
14	945,098	534,514
15	945,212	534,739

BOUNDARY COORDINATE TABLE		
POINT	NORTHING	EASTING
16	945,402	534,688
17	945,444	534,763
18	945,155	534,928
19	945,090	534,837
20	944,811	535,024
21	944,766	534,952
22	944,635	534,999
23	944,476	535,141
24	944,336	535,288
25	940,339	537,564
26	940,256	537,455
27	940,319	537,334
28	940,488	537,236
29	940,533	537,468

- LEGEND**
- = MAPPED HARD BOTTOM PER SIDESCAN SONAR SURVEYS (OSI: SEPT. 2016, JUNE 2017 AND FEB. 2018)
 - = DIVER MAPPED OFFSHORE HARD BOTTOM EDGE (CEG: JUNE 2018)
 - = MITIGATION REEF AREA
 - = BOUNDARY COORDINATE LOCATION



MITIGATION REEF AREA B
SCALE: 1" = 100'



COASTAL AND MARINE ENGINEERING ENVIRONMENTAL SERVICES GEOLOGICAL SERVICES SURVEY AND MAPPING	CLIENT: CHARLOTTE COUNTY BOARD OF COMMISSIONERS TITLE:	DATE: 7/15/2019 SCALE: AS NOTED DRAWN: SDB/FB CHECKED: MTP/PG SEC: TWP/ RRG ACAD NO: 19082-Mitigation Reef.dwg REF. NO:	SHEET NO. 19,082 DATE BY	REVISION DESCRIPTION
MANASOTA KEY MITIGATION REEF BOUNDARY AREAS				
COASTAL ENGINEERING CONSULTANTS A GROUP COMPANY Serving Florida Since 1977 3106 SOUTH HORSESHOE DRIVE NAPLES, FLORIDA 34104				
PHONE: (239)643-2324 FAX: (239)643-1143 www.coastalengineering.com E-Mail: info@cecill.com				
SHEET 3 FILE NO.: 19082-REEF-3				

